



GOOD MORNING

Have Good Trading Day

WEDNESDAY



Price is what you pay.
Value is what you get.

- Warren Buffet



MARKET PULSE

INDIAN INDICES

NAME	CMP	NET CH.	%
SENSEX	24883	-516	-2.03
NIFTY	7603	-155	-2.01

INDIAN ADR'S

SYMBOL	CLOSE	GAIN/ LOSS %
DRREDDY	45.33	-0.01
HDFCBANK	60.70	-0.80
ICICIBK	6.81	-0.26
INFY	18.81	-0.44
TATAMOTOR	27.82	-1.13
WIPRO	12.48	-0.31

FII AND MF ACTIVITY

SYMBOL	In Crs.
FIIs Eq (Provisional)	-800.79
FIIs Index Future	-1224.08
FIIs Index Options	527.13
FIIs Stock Future	323.65
FIIs Stock Options	-93.96
DII's Eq (Provisional)	55.85

CURRENCY

RBI RATE	05-APR-2016
RUPEE - \$	66.3248
EURO	75.5240
YEN 100	59.9800
GBP	94.4200

MARKET PULSE

GLOBAL INDICES

NAME	CMP	NET CH.	%
DOW	17603	-133	-0.75
NASDAQ	4843	-47	-0.98
NIKKEI	15777	+44	+0.28
HANG SENG	20188	+11	+0.05
SGX NIFTY	7632	+23	+0.31

WORLD COMMODITIES

FUTURE	U\$\$	CHANGES
CRUDE	36.89	+1.00
NATURAL GAS	1.941	-0.013
GOLD	1231.10	+1.50
SILVER	15.110	-0.006
COPPER	2.1490	+0.0110

WORLD EVENTS

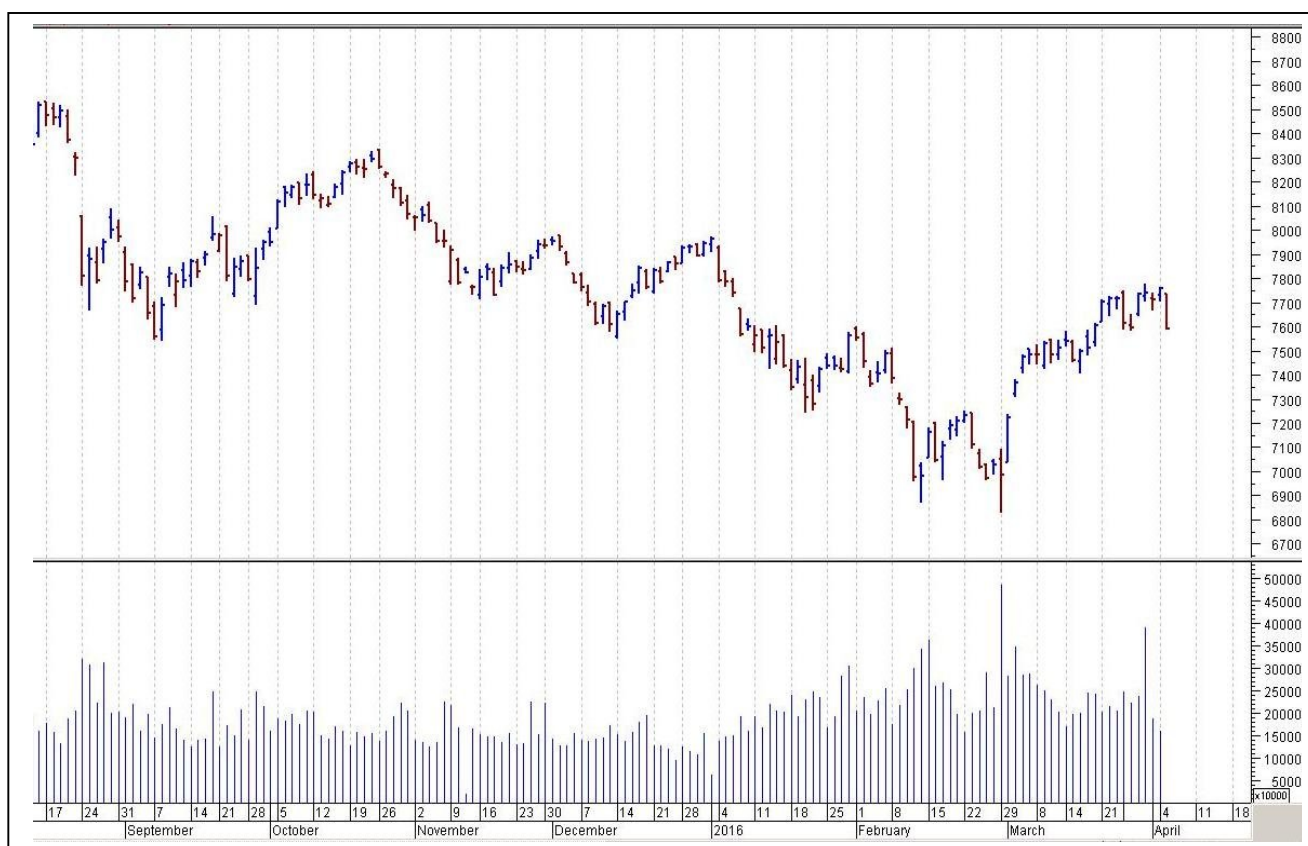
- US:Crude Oil Inventories
- FOMC Meeting Minutes
- UK:Housing Equity Withdrawal q/q

TOP STORY

- JK Tyres (DNA) Writes off `650 cr of Hardwar plant investment. Move in order to wipe out losses suffered by earlier owner Kesoram Ind.
- JMC Projects: Gets Second Prov Certificate To Start Ops At UP-MP Border Road Project
- Gallantt Ispat approves Proposal To Invest `511 Cr To Expand Capacity Of Various Plants
- Lenders to Kingfisher, say no to KFA's `4000 cr part repayment: FE
- RPG Life Sciences receives EUGMP certification for formulation facility at Ankleshwar
- GP Petroleums launches Repsol Lubricants (Spanish Brand) in India
- Era Infra Engineering LTD - Consortium of CO & SRS Real Infra Secures Contracts from Govt of Congo for \$87.6m (586 Cr)
- Govt to consider sugarcane prices for next season today: BS
- India serves steel products anti-dumping notice on China, others (reuters)



NIFTY CHART



MARKET COMMENTARY

Indian markets which looked controlling its breaths in early deals despite feeble global cues, went for a toss after the announcement of the Reserve Bank of India's (RBI) first bi-monthly policy review for the fiscal, where it going much on expected lines reduced repo rate by 25 basis points from 6.75 per cent to 6.5 per cent, while narrowed the policy rate corridor from +/-100 basis points (bps) to +/- 50 bps by reducing the MSF rate by 75 basis points and increasing the reverse repo rate by 25 basis points. Stock markets, which had rallied on hopes that Rajan would announce a bigger rate cut, in a knee-jerk reaction fell sharply despite the RBI saying that its policy would remain 'accommodative', raising the prospect of another rate cut later this year. RBI also pledged to inject more long-term liquidity. Though, traders welcomed the move but the 25 bps cut seemed already been priced into markets and they were looking for some unexpected or rather a firm outlook for further rate cuts. For today's trade Nifty likely to trade in the range between 7625 – 7645 in the upper side and 7585 – 7565 in the lower side.

MARKET LEVELS

	CMP	SUPPORT LEVELS				RESISTANCE LEVELS			
NIFTY	7603	7585	7565	7535	7505	7625	7645	7665	7695
USDINR	66.71	66.65	66.55	66.45	66.3	66.85	66.9	66.95	67.05



BULK DEALS (BSE)

SCRIP	CLIENT NAME	BUY/SELL	QUANTITY	PRICE
CAREERP	FRANKLIN TEMPLETON ASSET MANAGEMENT INDIA PRIVATE LIMITED	S	175,000	105.01
CAREERP	FIDELITY GLOBAL EQUITIES FUND	B	170,891	105
FRASER	NAGMAHESHWAR BALRAJ YELLAMELLI	B	39,000	28.91
VIDLI	EPCOT TRADING LLP	B	30,000	30.1

BULK DEALS (NSE)

SCRIP	CLIENT NAME	BUY/SELL	QUANTITY	PRICE
GREENPLY	ASHISH DHAWAN	SELL	1028227	179.03
KIRLOSBROS	AMANSA HOLDINGS PRIVATE LIMITED	SELL	500000	115.41
TALWALKARS	EQUITY INTELLIGENCE INDIA PRIVATE LIMITED [P M S]	BUY	208679	196.96

SCRIP'S IN F&O BAN

(To resume for normal trading below 80% of market wide limit required)

NIL

Initial Public Offering (IPO)

Company Name	Security type	Issue Start Date	Issue End Date	Status
Equitas Holdings Ltd	Equity	Apr 5, 2016	Apr 7, 2016	OPEN



NIFTY 50 STOCKS: SUPPORT & RESISTANCE						
Symbol	Close	Support 1	Support 2	Pivot Point	Resistance1	Resistance2
ACC	1391	1380	1370	1398	1408	1426
ADANI PORTS	226	219	212	231	238	249
AMBUJACEM	226	224	222	227	230	233
ASIANPAINT	870	859	849	872	883	896
AXISBANK	433	426	419	438	444	456
BAJAJ-AUTO	2395	2364	2333	2417	2448	2501
BANKBARODA	144	141	138	147	150	155
BHARTIARTL	331	324	318	335	342	353
BHEL	113	111	109	114	116	120
BOSCHLTD	19814	19623	19433	19894	20085	20356
BPCL	890	880	869	895	906	921
CAIRN	146	144	141	148	150	154
CIPLA	503	498	492	507	512	521
COALINDIA	275	271	267	278	282	289
DRREDDY	3000	2981	2963	3011	3029	3059
GAIL	340	336	332	342	346	352
GRASIM	3835	3810	3785	3848	3874	3912
HCLTECH	843	834	825	842	851	858
HDFC	1103	1089	1074	1100	1114	1125
HDFCBANK	1057	1050	1042	1063	1071	1085
HEROMOTOCO	2963	2938	2912	2975	3001	3038
HINDALCO	85	83	81	86	88	91
HINDUNILVR	869	860	851	871	880	892
ICICIBANK	226	221	217	229	234	242
IDEA	109	108	106	111	112	115
INDUSINDBK	951	944	936	954	961	972
INFY	1220	1208	1197	1225	1237	1254
ITC	326	324	321	327	330	333
KOTAKBANK	669	661	653	673	681	693
LT	1195	1179	1162	1207	1223	1251
LUPIN	1464	1447	1430	1463	1480	1496
M&M	1216	1204	1192	1226	1238	1259
MARUTI	3555	3495	3436	3596	3656	3756
NTPC	127	125	123	128	130	134
ONGC	206	204	202	206	208	210
PNB	83	81	79	84	86	89
POWERGRID	139	138	137	140	140	142
RELIANCE	1027	1019	1010	1031	1039	1051
SBIN	184	180	176	187	192	199
SUNPHARMA	801	795	789	806	812	823
TATAMOTORS	371	364	358	375	381	392
TATAPOWER	67	66	66	67	68	69
TATASTEEL	312	307	302	313	318	324
TCS	2463	2442	2420	2463	2484	2506
TECHM	462	457	452	465	470	478
ULTRACEMCO	3100	3073	3046	3124	3151	3202
VEDL	86	84	82	87	89	92
WIPRO	559	555	552	561	565	570
YESBANK	829	815	802	840	854	879
ZEEL	384	380	376	387	391	398



CORPORATE ACTION / BOARD MEETINGS

NSE Download Ref.No.: NSE/CML/31993:- Face Value Split - Vivimed Labs Limited from Rs. 10 to Rs. 2 w.e.f. April 6, 2016

NSE Download Ref No. : NSE/SURV/32137:-Bharat Wire Ropes Limited– SYMBOL – (BHARATWIRE) shall be transferred from trade fortrade segment (series: BE) to rolling segment (series: EQ) with effect from April 20, 2016(Wednesday)

BOARD MEETINGS

COMPANY NAME	DATE	PURPOSE	RS. PER SH.
CENTUM	6-Apr-16	Dividend	2
KPIT	6-Apr-16	Dividend	1.1
HINDZINC	6-Apr-16	Dividend	24
INDNIPPON	6-Apr-16	Dividend	5
COLPAL	6-Apr-16	Dividend	3
VIVIMEDLAB	6-Apr-16	Face Value Split From Rs 10 To Rs 2	
UNITEDTEA	7-Apr-16	Dividend	1
MINDTREE	11-Apr-16	Dividend	2
ARVINDREM	12-Apr-16	Annual General Meeting	
KSBPUMPS	12-Apr-16	Annual General Meeting/ Dividend	5.5
DICIND	12-Apr-16	Annual General Meeting/ Dividend	4
SANOFI	13-Apr-16	Dividend	47
ABB	13-Apr-16	Annual General Meeting/ Dividend	3.7
FOSECOIND	21-Apr-16	Dividend	7
MERCK	22-Apr-16	Annual General Meeting/ Dividend	7.5
VESUVIUS	26-Apr-16	Dividend	6.25
CASTROLIND	27-Apr-16	Annual General Meeting/ Dividend	5
RAIN	27-Apr-16	Annual General Meeting	
CRISIL	28-Apr-16	Dividend	

NEWS & RUMOURS:

- Gold (Spot Dollar) major support = \$1200/\$1170 & Resistance = \$1249/\$1281.
- Crude oil range->\$31 to \$41.
- Stocks Retreat as Yen, Bonds Advance amid Global Growth Concerns: - Stocks fell around the world, while the yen and government bonds rallied, as heightened concern that global growth is faltering drove investors into haven assets.
- Gold prices rally more than 1% on safe-haven demand: - Gold futures were higher in North American trade on Tuesday, extending sharp overnight gains as steep declines in global equity markets underpinned demand for assets perceived as safer. Market sentiment was hit as fresh falls in oil prices, which slid to [four-week lows](#), and a selloff in global equities added to fears over the outlook for global economic growth.
- Oil prices off the lows ahead of API supply report: - Oil prices declined in North American trade on Tuesday, but came off [overnight lows](#) as market players looked ahead to fresh weekly information on U.S. stockpiles of crude and refined products. The American Petroleum Institute will release its [inventories report](#) later in the day, while Wednesday's [government report](#) could show crude stockpiles rose by 3.3 million barrels in the week ended April 1.
- U.S. natural gas futures retreat from more than 7-week highs: - U.S. natural gas futures declined on Tuesday, as investors cashed out of the market to lock in gains from a recent rally which took prices to a more than seven-week high in the previous session. [A day earlier](#), gas futures soared to \$2.074, the most since February 12, as updated weather forecasting models pointed to a burst of chillier-than-normal weather across most parts of the U.S. in the coming days.

TRENDS & OUTLOOK – DATE: 06- Apr- 2016

PRECIOUS METALS:

COMMDITY (MCX)	S2	S1	PIVOT POINT	R1	R2
GOLD (June)	28200	28470	28760	29070	29365
SILVER (May)	34200	35091	36120	37200	38139

BASE METALS

COMMDITY (MCX)	S2	S1	PIVOT POINT	R1	R2
COPPER (Apr)	306	311	316	321	327
ZINC (Apr)	115.50	118.20	120.75	123.45	126.30
LEAD (Apr)	109.20	111.40	113.70	116.55	119.10
NICKEL (Apr)	531	547	563	585	597

ENERGY

COMMDITY (MCX)	S2	S1	PIVOT POINT	R1	R2
CRUDE OIL (Apr)	2160	2275	2374	2490	2575
NATURAL GAS (Apr)	120	124	131	137	144

DATE TALKS : TODAY'S ECONOMIC DATA :

Caixin Services PMI of China, Crude Oil Inventories, FOMC Member Mester Speaks, FOMC Meeting Minutes.



Registered Office

Indira House, 3rd Floor, 5 Topiwala Lane,
Opp. Lemington Road Police Station, Grant Road (East), Mumbai - 400007.

Corporate Office

'Ramavat House' E-15, Saket Nagar, Indore - 452018 (M.P.)

Customer Care

Tel: +91-731-4097170/ 71/ 72/ 73/ 74 M. +91 93031 72345

Email: customercare@indiratrade.com www.indiratrade.com



INSTITUTIONAL DEALING UNIT

Africa House, 5, Topiwalla Lane, Lamington Road, Mumbai, 400007

Tel: +91 22 30080678 Fax : +91 22 23870767 Email : ie@indiratrade.com

Disclaimer

This report is for private circulation within the Indira Group. This report is strictly confidential and for information of the selected recipient only and may not be altered in any way, transmitted to, copied or distributed, in part or in whole, to any other person or to the media or reproduced in any form. This report should not be construed as an offer or solicitation to buy or sell any securities or any interest in securities. It does not constitute a personal recommendation or take into account the particular investment objectives, financial situations, or any such factor. The information, opinions estimates and forecasts contained here have been obtained from, or are based upon, sources we believe to be reliable, but no representation of warranty, express or implied, is made by us to their accuracy or completeness. Opinions expressed are our current opinions as of the date appearing on this material only and are subject to change without notice.